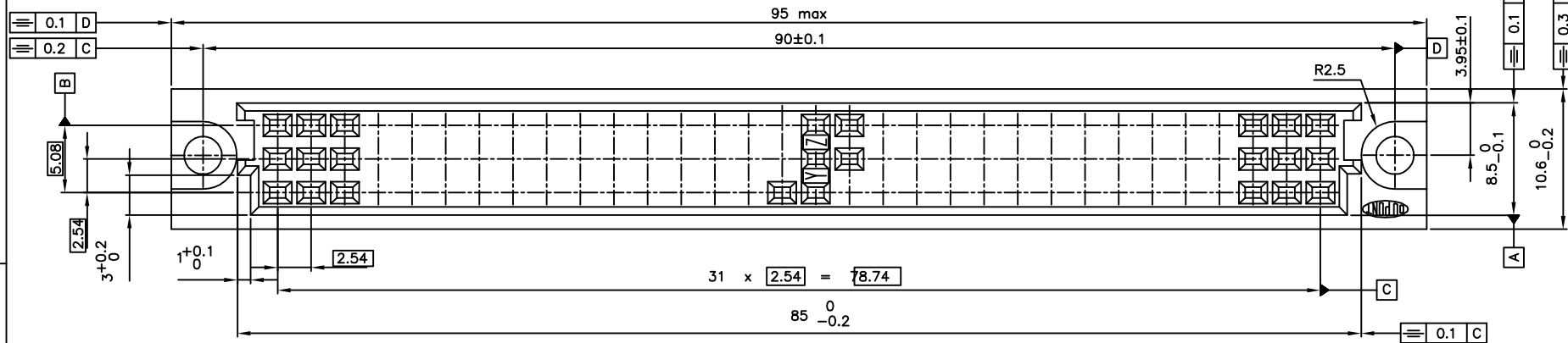
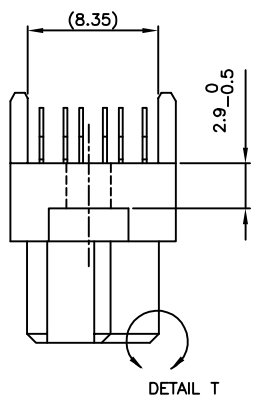
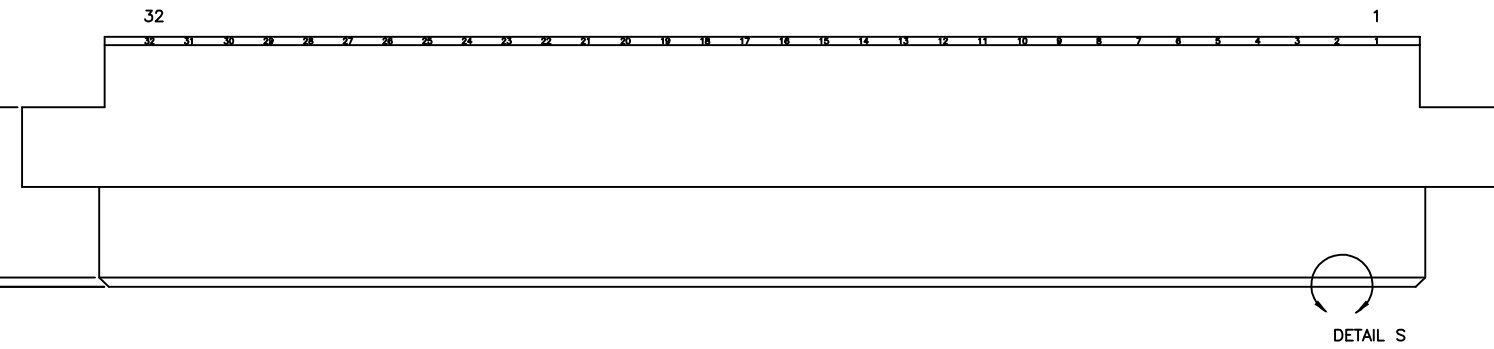
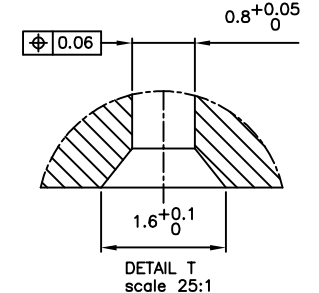
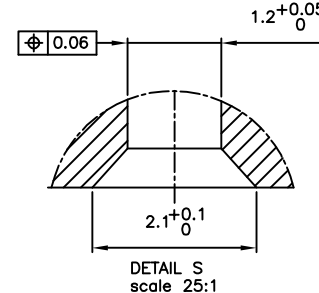
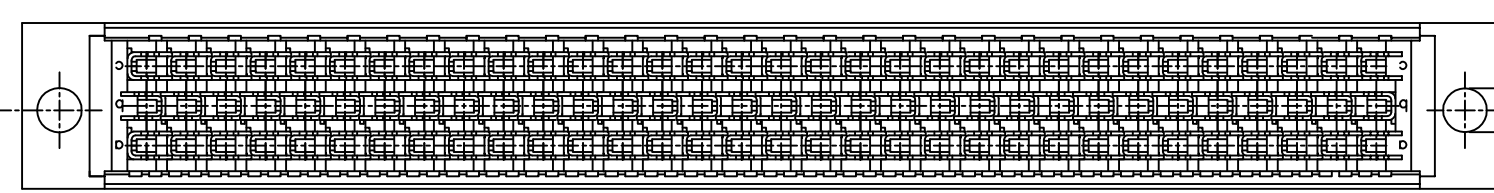


PRODUCT NR	ROW	1	2	3	4	5	6	7	8	9	10	11	12	13	14	15	16	17	18	19	20	21	22	23	24	25	26	27	28	29	30	31	32		
	a																																		
77345-2YZ	a	X	X	X	X	X	X	X	X	X	X	X	X	X	X	X	X	X	X	X	X	X	X	X	X	X	X	X	X	X	X	X	X	X	X
	b	X	X	X	X	X	X	X	X	X	X	X	X	X	X	X	X	X	X	X	X	X	X	X	X	X	X	X	X	X	X	X	X	X	X
	c	X	X	X	X	X	X	X	X	X	X	X	X	X	X	X	X	X	X	X	X	X	X	X	X	X	X	X	X	X	X	X	X	X	X
77345-4YZ	a	X	X	X	X	X	X	X	X	X	X	X	X	X	X	X	X	X	X	X	X	X	X	X	X	X	X	X	X	X	X	X	X	X	X
	b	X	X	X	X	X	X	X	X	X	X	X	X	X	X	X	X	X	X	X	X	X	X	X	X	X	X	X	X	X	X	X	X	X	X
	c	X	X	X	X	X	X	X	X	X	X	X	X	X	X	X	X	X	X	X	X	X	X	X	X	X	X	X	X	X	X	X	X	X	X

NOTE:-  
 1. THE "LF" PRODUCTS MEET EUROPEAN UNION DIRECTIVES AND OTHER COUNTRY REGULATIONS AS DESCRIBED IN GS-22-008.  
 2. LEAD FREE OR RoHS DIRECTIVE LABELLING TO BE PROVIDED AS PER GS-14-920 FOR LEAD FREE VERSION.



NOTES:  
 1. MATERIAL HOUSING: THERMOPLASTIC POLYESTER 30% GLASS FILLED, COLOUR: GREY, FLAME RETARDANT PER UL-94-V0  
 2. MATERIAL CONTACT: PHOSPHOR BRONZE  
 3. CODE YZ ON LEAD IN SIDE OF HOUSING APPLIES TO PIERCING TERMINAL IN RELATION TO AWG SIZE  
 4. FOR CABLE APPLICATION SEE TA 301  
 5. THIS CONNECTOR CAN BE MATED WITH 3 ROW MALE CONNECTOR CONFORM DIN 41612 - TYPE C AND TYPE R  
 6. "LF" SUFFIX TO THE PRODUCT NUMBER FOR LEAD FREE OR RoHS COMPATIBLE PRODUCTS.

PRODUCT CODE YZ	AWG SIZE	CONTACT AREA	PIERCING AREA
77345-X52	30	1.25 μm Au min over 3.0 μm Ni	0.1-0.2 mμNi
77345-X51	26	1.25 μm Au min over 3.0 μm Ni	0.1-0.2 mμNi
77345-X42	30	2.0 μm Au min over 3.0 μm Ni	0.1-0.2 mμNi
77345-X41	26	2.0 μm Au min over 3.0 μm Ni	0.1-0.2 mμNi
77345-X22	30	0.5 μm Au min over 3.0 μm Ni	0.1-0.2 mμNi
77345-X21	26	0.5 μm Au min over 3.0 μm Ni	0.1-0.2 mμNi
77345-X12	30	1.0 μm Au min over 3.0 μm Ni	0.1-0.2 mμNi
77345-X11	26	1.0 μm Au min over 3.0 μm Ni	0.1-0.2 mμNi
77345-X02	30	3.0 μm Au min over 3.0 μm Ni	0.1-0.2 mμNi
77345-X01	26	3.0 μm Au min over 3.0 μm Ni	0.1-0.2 mμNi

mat'l. code		surface		tolerance		projection		product family	
SEE NOTE		ISO 1302		ISO 406 ISO 1101		mm		BACKPANEL	
litr		ecn no		dr		date		title	
A		H20185		MVI		1992-03-31		CABLE CONNECTOR ASSY 3x32 POS.	
B		H20421		MVI		1992-08-16			
C		H80553		DDB		1998-08-06			
D		I05-0138		MINI		2005-08-08		dwg no	
E		I06-0082		MINI		2006-06-01		sheet 1 of 1	
				chr		M.VISSCHERS		size	
				appd		1992-03-31		A3	
						1998-05-08			
						2006-06-01			
						2006-06-01			
sheet index		revision sheet		E		1		type Product Customer Drawing	



Copyright FCI